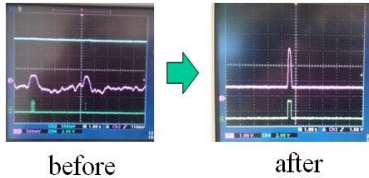


# FRD800

## Fast Precision Radon Monitor

### DESCRIPTIONS

FRD800 is a fast & precision radon monitor. It's sensitivity is **1.5cpm/pCi/l** by 800cc pulsed ion chamber & FTLAB's high stable special circuit technology.



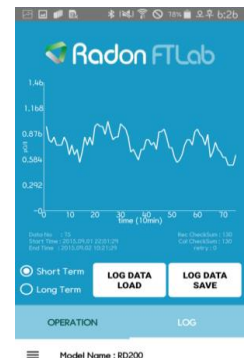
Minimum measurement time is just **20min** after measurement start. Also the accuracy is  $< \pm 6\%$  at 10pCi/l. Also wide 3.2inch TFT LCD & simple operating process gives user's convenience. Economic cost of FRD800 gives the best price performance among the conventional radon monitors.

### SPECIFICATION of FRD800

- Type : pulsed ion chamber 400cc x 2ch
- **Data interval : 10min, 1h (10min update)**
- **Sensitivity : 1.5cpm/pCi/l at 10pCi/l (90cph/pCi/l)**
- Operating range : 10~40°C, RH < 90%
- Range : 0.05 ~ 99.99 pCi/l
- Precision :  $< \pm 5\%$  at 10pCi/l
- Accuracy :  $< \pm 6\%$  at 10pCi/l (min. error  $< \pm 0.35$ pCi/l)
- Internal sensor : temp. , humidity, vibration, pressure
- Air supply : forced air fan
- Power : DC 5V, 1A (5V DC adapter)
- Size : W260 x D285 x H100(mm)
- Data communication : Bluetooth LE, USB to PC
- Data log : 10 slots / 1month (1data/h)
- Display : 3.2 inch TFT-LCD
- weight : 3.2kg
- Air flow : 5L/minute

### Applications

- indoor real time radon monitoring
- inspection of radon concentration



<smart phone App>



<typical front panel view >

### Ordering information

- contact point : [sales@ftlab.kr](mailto:sales@ftlab.kr)
- All products are made in KOREA