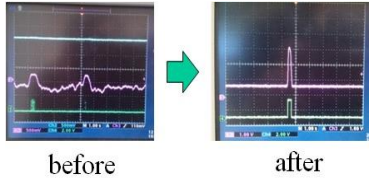


# FRD1600

## Fast Precision Radon Monitor

### DESCRIPTIONS

FRD1600 is a fast & precision radon monitor. It's sensitivity is **3cpm/pCi/l** by 1.6liter pulsed ion chamber & FTLAB's high stable special circuit technology.



Minimum inspection time is just **10min** after measurement start. Also the accuracy is  $< \pm 3\%$  at 10pCi/l. Also wide 7inch touch panel display gives user's convenience. Real time analog detection waveforms as well as Radon concentration graph would be very useful insight to investigate the radon characteristics.

### SPECIFICATION of FRD1600

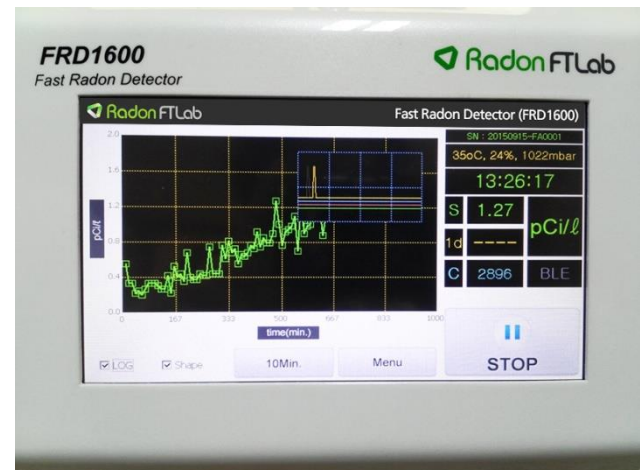
- Type : pulsed ion chamber 400cc x 4ch
- **Data saving interval : 10min, 20min, 30min, 1h**
- **Sensitivity : 3cpm/pCi/l at 10pCi/l (180cph/pCi/l)**
- Operating range : 10~40°C, RH < 90%
- Range : 0.05 ~ 99.99 pCi/l
- Precision :  $< \pm 3\%$  at 10pCi/l
- Accuracy :  $< \pm 3\%$  at 10pCi/l (min. error  $< \pm 0.2$ pCi/l)
- Internal sensor : temp. , humidity, vibration, pressure
- Air supply : forced air fan or internal pump 0.5LPM(option)
- Power : DC 5V, 1.5A (5V DC adapter)
- Size : W205 x D320 x H190(mm)
- Data communication : RS232, Bluetooth LE
- Data log : 10 slots
  - each slot has 10min step, 10days storage capacity
- Analog out ch : 4ch ,  $\alpha$  detection waveform 0~3V
- Display : 7 inch touch panel TFT-LCD
- Weight : 3.9kg
- Air flow : 5L/minute

### Applications

- indoor real time radon monitoring
- Radon research



<smart phone App>

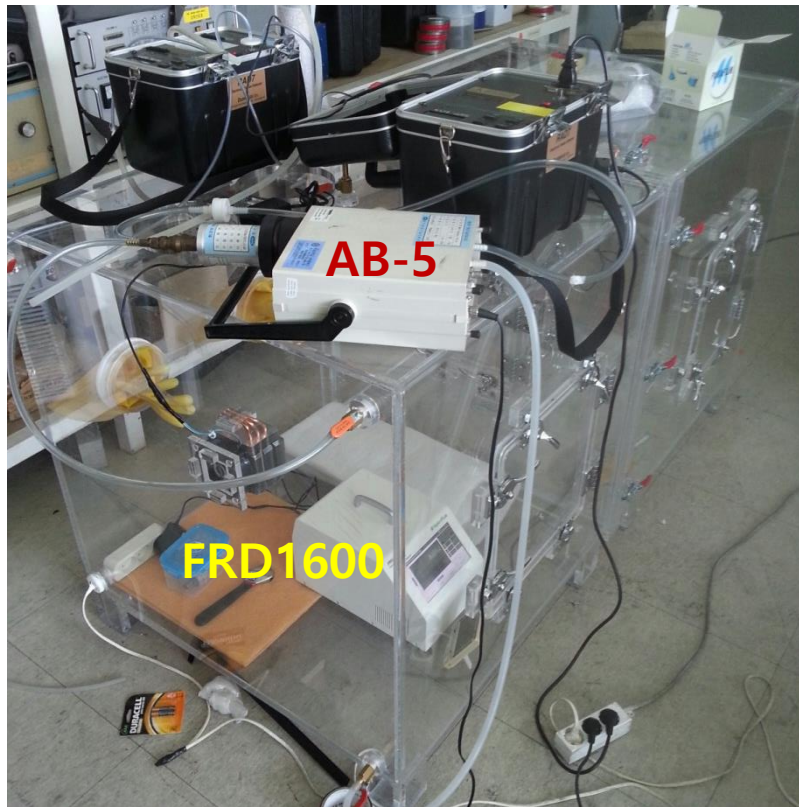


<typical front panel graph & detection pulse >

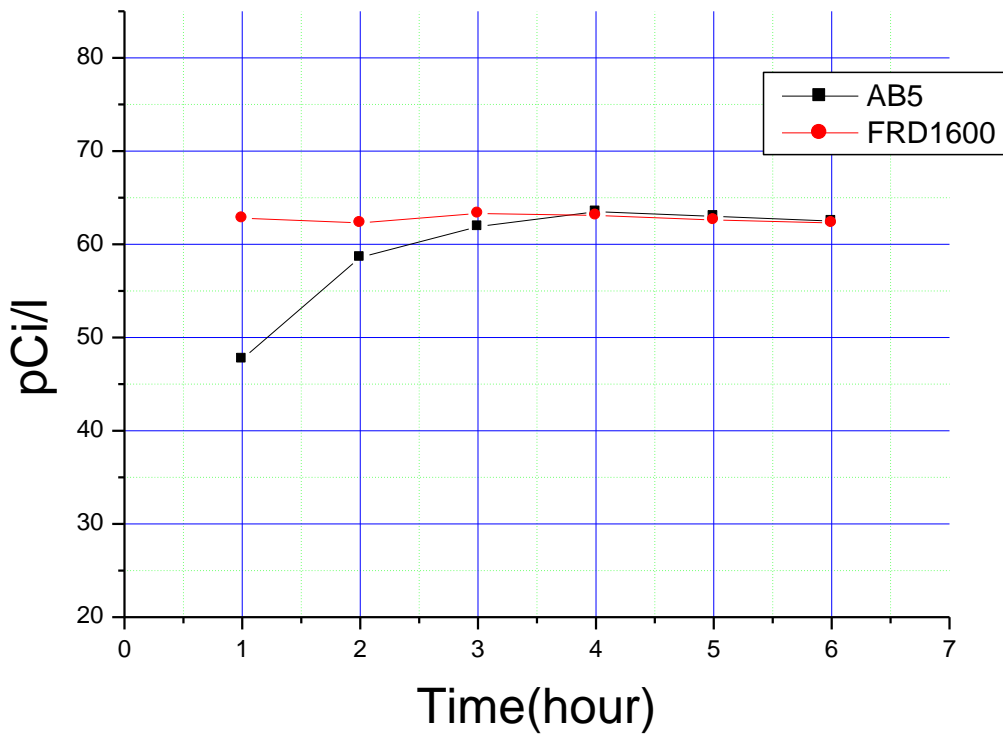
### Ordering information

- contact point : [sales@ftlab.kr](mailto:sales@ftlab.kr)
- All products are made in KOREA

# Comparison of FRD1600 with AB-5 at Yonsei Univ.



Experimental setup for comparison test (2015. 09. 15)  
(AB-5 : sensitivity 1.32cpm/pCi/l, PMT type)



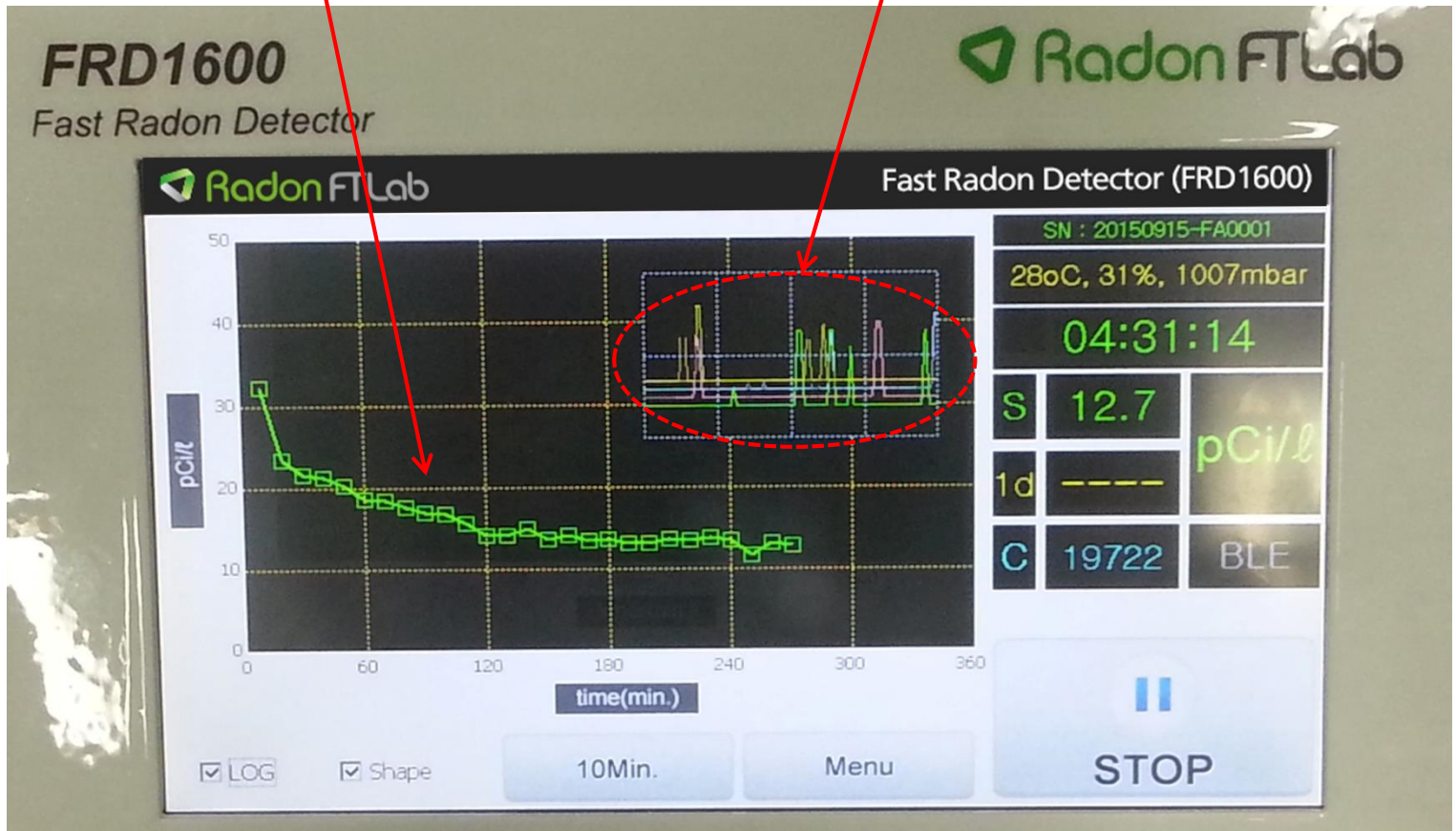
AB-5	FRD1600
47.7	62.8
58.6	62.3
61.9	63.3
63.5	63.1
63	62.6
62.5	62.3

Experimental results : FRD1600 & AB-5

# Real time analog detection waveform

Radon concentration curve

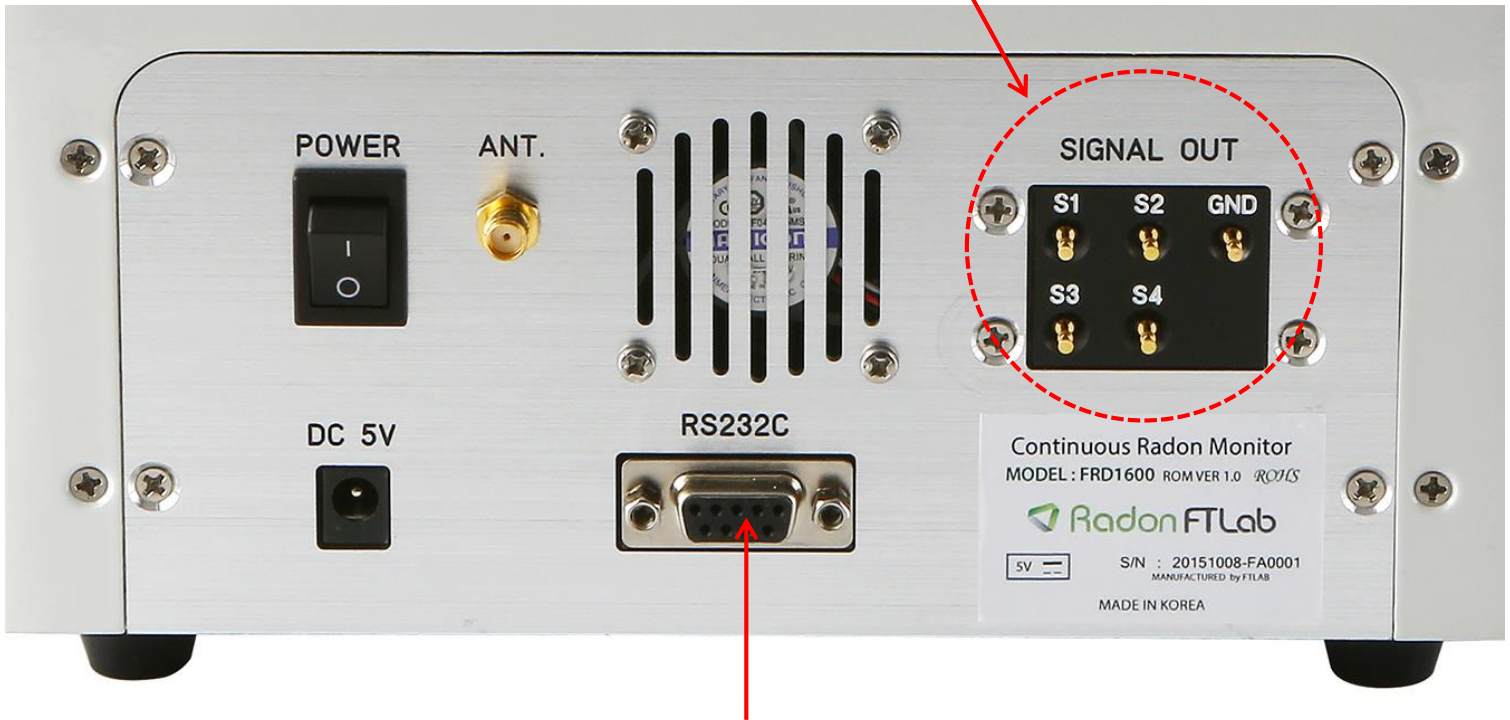
Analog detection waveforms(4ch)



Experimental results of Radon Decay test

# Ports of Rear Panel

Analog detection waveforms out(0~3V)



RS232 for PC